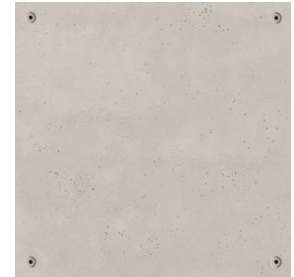




Collection - Unique | Finish - Beton Rectified
Shade variation - V2 | Recycled content - 28 %

Packing and weights

Pieces/Box		Boxes/Pallet		weight		
unit	m2	Boxes	m2	Kg/m2	Kg/Box	Kg/Pallet
2	1.58	30	47.40	25.00	39.50	1,214



	Test	Value/Standard Tolerance	Typical Product Value *	Test Standard	
	Dimensional Characteristics				
	Length and Width	± 0.6% MAX. ± 2mm	± 0.1% ± 0.1%		
	Orthogonality	± 0.5% MAX. ± 2mm	± 0.3%		
	Straightness	± 0.5% MAX. ± 1.5mm	± 0.3%	EN ISO 10545-2	
	Flatness	± 0.5% MAX. ± 2mm	± 0.3%		
	Thickness	± 5% MAX. ± 0.5mm	± 3% MAX. ± 0.4mm		
	Water Absorption	E ≤ 0.5%	E ≤ 0.1%	EN ISO 10545-3	
	Deep Abrasion	≤ 175 mm3	130 mm3	EN ISO 10545-6	
	Linear Expansion		≤ 7.00E-06 / °C	EN ISO 10545-8	
	Thermal Shock Resistance		Resistant	EN ISO 10545-9	
	Frost Resistance		Must not produce noticeable alterations to surface	Resistant	EN ISO 10545-12
	Lead Release		For special surfaces (for instance, kitchen counter)	Test upon request	EN ISO 10545-15
	Rupture Modulus N/mm2 Breaking Strength in N	⇒ 35N/mm2 ⇒ 1300N	⇒ 45N/mm2 / ⇒ 460Kg/cm2 ⇒ 2500N	EN ISO 10545-4	
	Test	Chemical Product	Value/Standard Tolerance	Typical Product Value *	Test Standard
		Hydrochloric acid (18%)		To be confirmed case by case	
		Lactic acid (5%)		To be confirmed case by case	
	Resistance to acids and bases (high and low concentrations)	Potassium hydroxide (100g/l)	To report classification for low concentrations of acids and alkalis / Optional for high concentrations of acids and alkalis	To be confirmed case by case	
		Hydrochloric acid (3%)		To be confirmed case by case	EN ISO 10545-13
		Citric acid (100g/l)		To be confirmed case by case	
		Potassium hydroxide (30g/l)		To be confirmed case by case	
		ammonium chloride (100g/l)		Minimum Class B	Guaranteed
	Resistance to cleaning products	Sodium hypochlorite (20mg/l)		Guaranteed	
	Stain Resistance	Olive Oil		≥ Class 2	
		Green Chromium/Iron oxide	Declare Value	≥ Class 2	EN ISO 10545-14
		Iodine		≥ Class 2	
	Slip Resistance **		Test upon request	To be confirmed for each ref.	

* Indicative value

** Tests carried out by certified external laboratories whose results are available upon request at head office. Pavigrés is available to prove in our own laboratories the technical characteristics of any purchased lot upon request. Anti-slip performance is guaranteed at the time of delivery of the product.

It is guaranteed the compliance with the values required by norm EN 14411. Typical Pavigrés reference value is merely indicative, which can vary from real data, and does not have the purpose of any trading proposal.